

# PRECISION ENGINEERING JS COMPANY



**HEAD OFFICE: HTH PRECISION ENGINEERING JS COMPANY**

**Address: Lot 17 Cao An industrial cluster - Phu An village  
Cao An commune - Cam Giang District - Hai Duong Province**

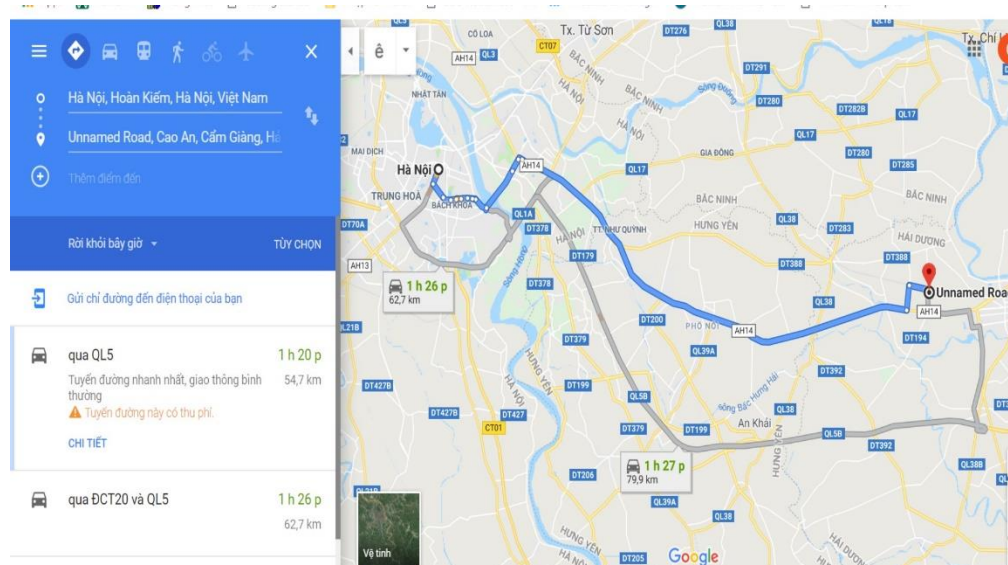
Tax code: 0801180040; Mobile: 0946.208.130

Email: [inbox@hthcompany.com.vn](mailto:inbox@hthcompany.com.vn)  
Web: <http://www.hthcompany.com.vn>

## INTRODUCTION

HTH Precision Mechanical Joint Stock Company (HTH) was established in 2016. The company is in the context of the country's mechanical industry which on the way of integration. HTH is responsible for the production, research, application & development of precision mechanical engineering, heavy engineering, manufacturing of industrial lines such as waste preliminary processing lines, Asphan hot plastic mixing plants, cement concrete batching plants and lines in other industries.

The company headquarters is built on an area of about 3 hectares in Cao An industrial cluster - Phu An village - Cao An commune - Cam Giang district - Hai Duong province. It is located on 5B National Highway and about 55 km from Hanoi as well as 55 km from Hai Phong Seaport. HTH is considered to be the most advantageous position in transportation and transshipment of goods in the region.



HTH is made up of the following factories:

- Machine parts manufacturing workshop (CTM)
- Machine assembly and assembly factory (LRM)
- Product cleaning and painting workshop (LS)
- Mechanical and electrical parts (CD) and mechanical parts (CG)

The workshops in the company are equipped with modern production lines based on the Japanese technology. The production technology equipment is built and installed on the basis of technology lines of modern mechanical plants - closed lines.

The workshops in HTH are equipped with heavy, modern & synchronous mechanical processing equipment such as: lathe machines 18 meters long; 6 meters CNC lathe & milling machine; horizontal CNC boring machines, vertical lathes ... can be processed in details up to 3m in diameter, ... to manufacture super-sized and super-heavy equipment for heavy industry.

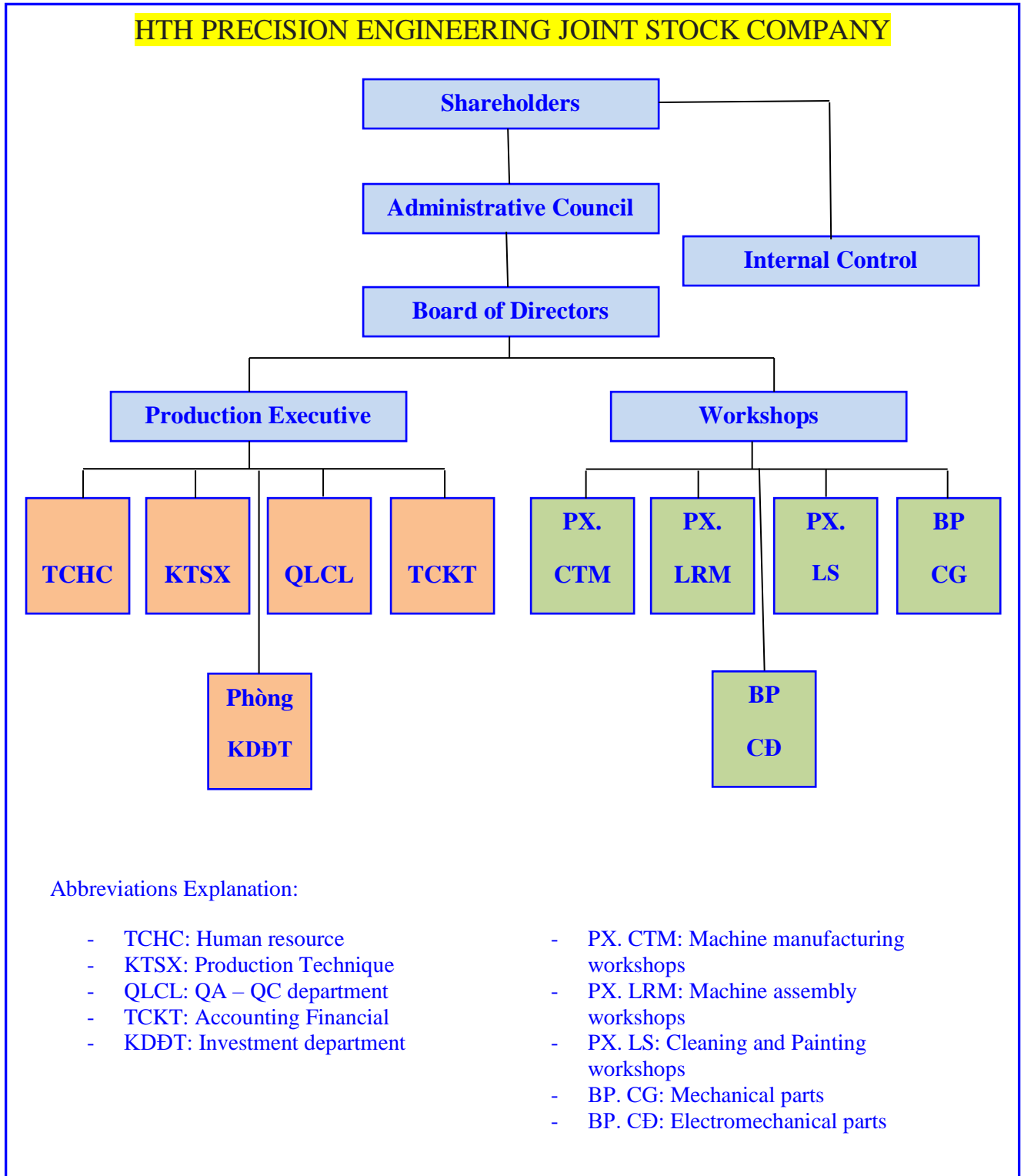
Although the company was established not long ago, HTH really proved its technological capability in all stages from research, design, manufacture, to warranty installation services. HTH successfully fabricated large non-standard mechanical parts as well as completed the technological process of manufacturing the following products:

- Large single-body steel columns and lighting poles.
- Rubber pyrolysis furnace system into FO-R oil
- The system for processing and sorting domestic waste up to 900 tons of garbage / 24h.
- Asphalt batching system and cement concrete mixing plant,
- Pressure devices, accessories for the road and bridge industry such as expansion joints, long haul, cantilever casting, steel bridge bearings of all kinds.
- Non-standard mechanical equipment used in the electricity industry such as large power turbines, hydropower valve support bearings

In the trend of integration & competition, HTH looks forward to working closely with Vietnamese enterprises in general & manufacturing mechanical enterprises in particular to jointly develop technological capabilities and cooperate to implement large projects, improving the internal force of the home industry.

HTH always aims to be effective with the commitment:

ORGNAISATIONAL CHART



**LIST OF STAFFS**

|   | <b>Name</b>                       | <b>Gender</b> | <b>DOB</b> | <b>Qualification</b>  | <b>Experiences</b>  | <b>Working years</b> |
|---|-----------------------------------|---------------|------------|---|---|----------------------|
| 1 | Ha Thanh Tu<br>(Director)         | Male          | 1985       | - Ship Engine Engineer – Vietnam Maritime University                    | -Chief engineer designing industrial machines and equipment lines.<br>-5 years experiences in the field of management | 11                   |
| 2 | Le Xuan Hung<br>(Vice President ) | Male          | 1977       | - Engineers rolling stock<br>- Hanoi University of Transportation       | -15 years experiences in machine manufacturing<br>-Chief engineer designing industrial machines and equipment lines.  | 20                   |
| 3 | Nguyen Huu Tuan                   | Male          | 1983       | - Construction machine engineer<br>- Hanoi University of Transportation | -02 year experiences in Equipment control.<br>-11 year experiences in QA, QC  | 13                   |
| 4 | Tran Duy Quynh                    | Male          | 1983       | - Manufacturing engineer<br>- Hung Yen Technical University             | - Production technical manager  | 13                   |
| 5 | Dao Manh Hieu                     | Male          | 1981       | - Manufacturing engineer<br>- Hanoi Polytechnic University              | -15 years experiences in industrial manufacturing   | 15                   |
| 6 | Le Quang Tien                     | Male          | 1984       | - Bachelor of machine building<br>- Technical College of Engineering    | - 12 years experiences in industrial manufacturing  | 12                   |
| 7 | Le Quang Vi                       | Male          | 1985       | - Machine manufacturing technology engineer                             | -10 years experiences in industrial manufacturing   | 11                   |

## MAIN PRODUCTS AND SERVICES

### 1. DESIGN CONSULTING

- Consulting design of industrial and civil works, synchronous equipment lines such as rubber pyrolysis line, waste sorting line, waste incinerator line, Asphan batching station and station. mixing cement concrete.
- Consulting design of steel structures, prefabricated buildings, standard and non-standard steel works.
- Consulting design and construction of piping systems on ships, piping systems for oil refineries, drilling rigs and paper factories.
- Using standard software such as Tekla, Autocad, Solid work, Mechanical work.

### 2. MANUFACTURING PROCESSING

- Processing and manufacturing equipment used in the shipbuilding industry: cranes, anchor winches, pressure piping systems, hatch covers, propeller shafts, steering axle systems, watertight doors ....
- Construction machinery and accessories used in road and bridge industry.
- Other non-standard equipment: all kinds of pressure tanks, single-pole electric poles, digging columns, rubber pyrolysis systems, conveyor systems, lifting equipment, cranes.
- Manufacturing equipment for aviation industry: airports, airport bridges and other systems.

### 3. SERVICE

- Cleaning and painting services for industrial equipment surface treatment.
- Repair and restoration of industrial lines.
- Rental of factories, land and specialized equipment.

PROJECT: EXECUTION EQUIPMENT SERIES OF HIGH SPEED ROADS  
AND STEEL BRIDGE - STEEL CONCRETE BRIDGE  
Investor: Domestic BOT  
Main contractor: Transport construction companies



**PROVIDED:**

- Special steel structure for bridge construction
- Cantilever car.
- Columns, railings for road bridges
- Steel bridge girders, steel piers.
- All types of expansion joint.



PROJECT: HOT PLASTIC CONCRETE STATION and CEMENT CONCRETE  
Investor: BOT Main contractor  
ENQ Company, Spain Vietnam



SUPPLY: stations from 60-240 tons / h nationwide

PROJECT: COLLECTIVE STEEL POWER 110kv-220kv  
Owner: domestic and international  
Main contractor: Dong Anh Steel Column Manufacturing Co., Ltd.



SUPPLY: Standard single-piece burn-in steel columns for power transmission 110kv-220kv. The weight of each column is up to 60 tons / column and the average height is 65m / column.



**PROJECT: OIL FO-R FACTORY**

Investor: Indevco Group - Song Day Joint Stock Company  
Main contractor: HTH Precision Mechanical Joint Stock Company



**Pyrolysis furnace**



**Condensing System**



**Down pressure tank**



**Pipeline System**

**PROJECT: CFG FLOATING GLASS FACTORY - NINH BINH**

Investor: INDEVCO Group Joint Stock Company

Contractor: HTH Precision Mechanical Joint Stock Company

CAPACITY 1200 TONS / DAYS



**Automatic coal discharge system**



**Soda hopper**



**Sightseeing hut**



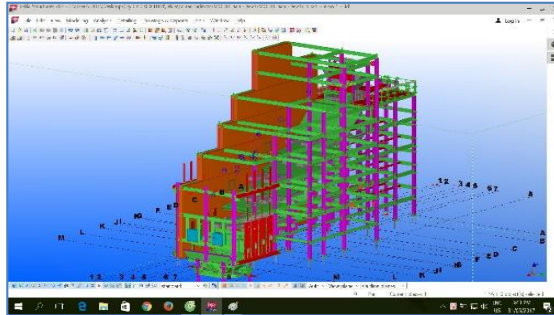
**Importing system**

PROJECT: WASTE TREATMENT CENTER OF QUANG NINH PROVINCE

Investor: INDEVCO Group Joint Stock Company

Main contractor: HTH Precision Mechanical Joint Stock Company

CAPACITY 900 TONS / DAY



**A waste incinerator overall design  
Capacity of 150 tons/ day**



**Steel structure rig frame system**



**Heat gun system**



**Smoke treatment system**



**Automatic lifting system**

PROJECT: EXPLOSION PROOF ELECTRICAL CABINET  
Investor: Research Institute of Energy and Mining  
Main contractor: HTH Precision Mechanical Joint Stock Company



**SOME PRODUCTS FOR INDUSTRIES**



**Multi-edge steel column**



**Lighting column**



**Welcome gate**



**Welcome gate**



**Monopole column**



**Telecommunication column**



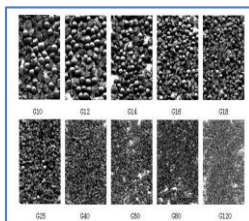
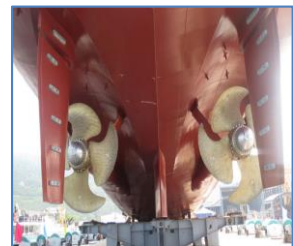
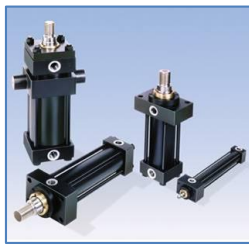
**Formusa signpost**

**SOME PRODUCTS ARE USED IN THE VESSEL INDUSTRY**



**PROVIDED:**

- Propeller shaft system, steering system, steering wheel.
- Hydraulic cylinder system, watertight door, david crane.
- Grinding beads clean the hull steel surface.
- Service: hot dip galvanized.
- Accessories of piping systems on board.



**SOME MANUFACTURING PRODUCTS**



**TL Rim worn pump**



**TL impeller direction**



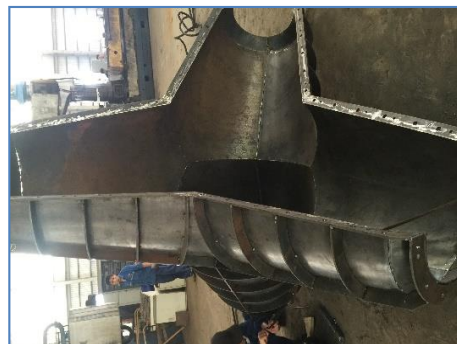
**TL big size pump**



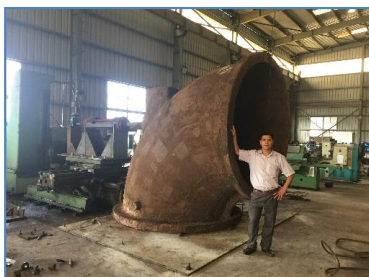
**Joint expansion**



**3 hydroelectric power stations**



**Terapot**



**SOME MANUFACTURING PRODUCTS**



**Funnel - Conveyor**



**Flow direction pump**



**Crane on board**



**Cone**



**Steel structure beams**



**Steel structure (Fender)**



**Tube details**



**Hydroelectric rotary pillow**



CONSTRUCTION OF STEEL STRUCTURE OF FACTORY  
CONSULTING - DESIGN - BUILDING CONSTRUCTION HEAVY  
INDUSTRIAL FACTORY



**Manufacturing crane system**



**Steel structure erection**



**CAPACITY OF FACTORY - ENHANCED EQUIPMENT**

|   | Factory name                          | Area (m2)  | Lifting equipment |                    | Note  |
|---|---------------------------------------|--|-------------------|--------------------|-------|
|   |                                       |  | Amount            | Weight             |       |
| 1 | Machine manufacturing workshop        | 3.200  | 3<br>2            | 10 tons<br>5 tons  | Crane |
| 2 | Machine assembly and assembly factory | 4.600  | 2<br>2            | 20 tons<br>10 tons | Crane |
| 3 | Cleaning and painting workshops       | 1.440  | 1                 | 3 tons             | Crane |
| 4 | Concentrated area of hazardous waste  | 150  | -                 | -                  | -     |
| 5 | Concrete yard erected                 | Erection yard with a total area of nearly 5000m2 used to install large construction machines |                   |                    |       |
| 6 | Operator area (500m2)                 | Working areas are fully equipped with an international standard.                             |                   |                    |       |
| 7 | Canteen                               | 250 meals per shift  |                   |                    |       |
| 8 | Crane (1 car)                         | TADANO tire cranes – 25 tons of tires  |                   |                    |       |
| 9 | Forklift truck                        | TCM 10 tons forklift (2 vehicles)  |                   |                    |       |

**TESTING EQUIPMENT AND TESTING IN THE FACTORY**

|   | List of equipment                         | Amount | Produced year | Owner | Technical features |
|---|---|--------|---------------|-------|--------------------|
| 1 | Ultrasonic welding machine (DACOTA – USA) | 01     | 2017          | HTH   | New                |
| 2 | SS1100 Ultrasound machine                 | 05     | 2017          | HTH   | New                |
| 3 | Theodolite                                | 03     | 2017          | HTH   | New                |
| 4 | Hardness tester                           | 01     | 2017          | HTH   | New                |
| 5 | Paint thickness gauge                     | 04     | 2017          | HTH   | New                |

## SOME TYPICAL CERTIFICATES

SỞ KẾ HOẠCH VÀ ĐẦU TƯ  
TỈNH HẢI DƯƠNG  
PHÒNG ĐĂNG KÝ KINH DOANH

CỘNG HÒA XÃ HỘI CHỦ NGHĨA VIỆT NAM  
Độc lập – Tự do – Hạnh phúc

### GIẤY CHỨNG NHẬN ĐĂNG KÝ DOANH NGHIỆP CÔNG TY CỔ PHẦN

Mã số doanh nghiệp: 0801180040

Đăng ký lần đầu: ngày 25 tháng 04 năm 2016

Đăng ký thay đổi lần thứ: 1, ngày 15 tháng 05 năm 2017

#### 1. Tên công ty

Tên công ty viết bằng tiếng Việt: CÔNG TY CỔ PHẦN CƠ KHÍ CHÍNH XÁC HTH

Tên công ty viết bằng tiếng nước ngoài: HTH PRECISION ENGINEERING JOINT STOCK COMPANY

Tên công ty viết tắt: HTH. JSC

#### 2. Địa chỉ trụ sở chính

Thôn Phú An, Xã Cao An, Huyện Cẩm Giàng, Tỉnh Hải Dương, Việt Nam

Điện thoại: 0946 208 130

Fax:

Email:

Website:

#### 3. Vốn điều lệ

Vốn điều lệ: 10.000.000.000 đồng

Bằng chữ: Mười tỷ đồng

Mệnh giá cổ phần: 100.000 đồng

Tổng số cổ phần: 100.000

#### 4. Người đại diện theo pháp luật của công ty

\* Họ và tên: HÀ THANH TÚ

Giới tính: Nam

Chức danh: Giám đốc

Sinh ngày: 01/12/1985

Dân tộc: Kinh

Quốc tịch: Việt Nam

Loại giấy tờ chứng thực cá nhân: Thẻ căn cước công dân

Số giấy chứng thực cá nhân: 031085003579

Ngày cấp: 13/04/2016

Nơi cấp: Cục cảnh sát ĐKQL cư trú và DLQG về dân cư

Nơi đăng ký hộ khẩu thường trú: Khu Hoàng Xá, Thị Trấn An Lão, Huyện An Lão, Thành phố Hải Phòng, Việt Nam

Chỗ ở hiện tại: Khu Hoàng Xá, Thị Trấn An Lão, Huyện An Lão, Thành phố Hải Phòng, Việt Nam

*khac*



TRƯỞNG PHÒNG

*Lê Luân Hiền*

## PARTNERS OF HTH



Indevco Group, Vietnam



Thạch Thước Thời Gian  
Cement Group, Vietnam



Hyundai Steel Company ,  
Dong Anh



Ned deck Marine  
Company



Vietnam National Oil and  
Gas Group



Hai Duong Pump  
Company



Pump institute irrigation  
equipment



Vietnam Mineral Coal  
Group



Energy and Mines  
Mechanical Engineering  
Institute



Winel Company, Vietnam



BQP Technology Institute